

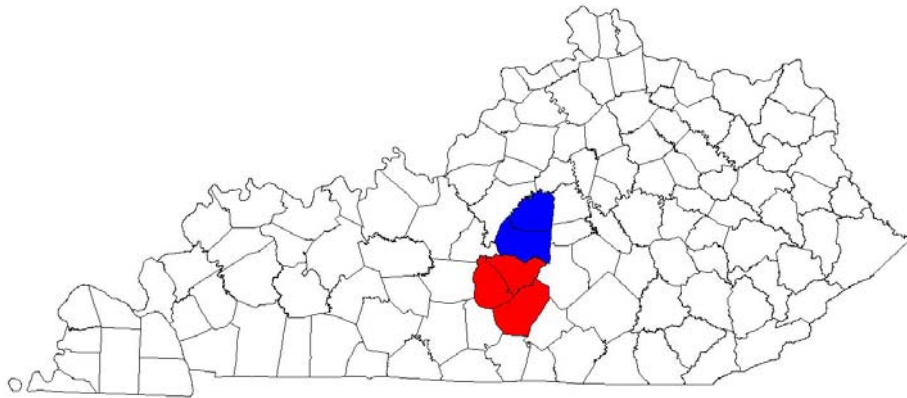
**APPENDIX H.**  
**ENVIRONMENTAL JUSTICE**

# Environmental Justice and Community Impact Report

## *Heartland Parkway*

KY 555, US 68, & KY 55 from the Louie B. Nunn Cumberland  
Parkway to the Martha L. Collins Bluegrass Parkway

August 2004



Prepared by

Lincoln Trail ADD  
P.O. Box 604  
Elizabethtown, KY 42702  
Phone: 270-769-2393

Lake Cumberland ADD  
P. O. Box 1570  
Russell Springs, KY 42642  
Phone: 270-866-4200

## Table of Contents

	Page
1.0 <i>Introduction</i>	3
2.0 <i>What is Environmental Justice?</i>	4
3.0 <i>Methodology</i>	5
4.0 <i>Census Data Analysis</i>	5
5.0 <i>Study Findings / Study Area</i>	6
6.0 <i>Study Findings / Population by Race</i>	7
7.0 <i>Study Findings / Population by Poverty Level</i>	9
8.0 <i>Study Findings / Population by Age</i>	12
9.0 <i>Conclusion</i>	13

### *Appendices*

<i>Appendix A.</i>	<i>Planning Study Contact List</i>
<i>Appendix B.</i>	<i>Methodology for Assessing Potential Environmental Justice</i>
<i>Appendix C.</i>	<i>Census Tracts and Block Groups (Maps) Figure 5.3 – 5.4</i>
<i>Appendix D.</i>	<i>Census Tracts and Block Groups (Tables) Population by Race (Figure 6.0 – 6.5) Population by Poverty Level (Figure 7.0 – 7.5) Population by Age (Figure 8.0 – 8.5)</i>

## 1.0 Introduction

This document assesses the community demographics involved in the proposed project, a new route and/or reconstruction of segments of (US 68, KY 55, and KY 555) also known as the Heartland Parkway, from the Louie B. Nunn Cumberland Parkway to the Martha L. Collins Bluegrass Parkway. The Lincoln Trail Area Development District (ADD) in a collaborative effort with the Lake Cumberland Area Development District have analyzed and prepared the following document to identify any concentration of population that could be displaced or segmented as result of the proposed project. The data displayed in this report has been compiled from a number of sources including the U.S. Census Bureau, Kentucky State Data Center, Kentucky Transportation Cabinet (KYTC) Division of Planning, local elected officials, community leaders, and field observations of the study area. The information and results are intended to assist the Kentucky Transportation Cabinet in making informed and prudent transportation decisions in the study area, especially as it pertains to the requirements of Executive Order 12898<sup>1</sup>, to ensure equal protection to all groups potentially impacted by this project.

This report includes maps and tables of statistical comparisons of the study area based on US Census 2000 tracts and block groups with regard to minority, low-income, and aging populations for the United States and Kentucky (Adair, Green, Taylor, Marion, and Washington Counties.) The study area includes tracts and block groups directly in and around portions of the defined area. For the purpose of this report, the study area has been divided into a northern corridor and a southern corridor. A map (*Figure 1.1*) on the following page depicts both corridors encompassed by the Heartland Parkway study area.

### **Northern corridor *includes:***

Marion County  
Washington County

### **Southern corridor *includes:***

Adair County  
Green County  
Taylor County

---

<sup>1</sup> Executive Order 12898 signed on February 11, 1994 states "...each Federal agency shall make achieving environmental justice part of its mission by identifying and addressing, as appropriate, disproportionately high and adverse human health or environmental effects of its programs, policies, and activities on minority populations and low-income populations..."

## 2.0 What is Environmental Justice?

The U.S. EPA Office of Environmental Justice (EJ) defines EJ as:

“The fair treatment and meaningful involvement of all people regardless of race, color, national origin, or income with respect to the development, implementation and enforcement of environmental laws, regulations and policies. Fair treatment means that no group of people, including racial, ethnic, or socio-economic group should bear a disproportionate share of the negative environmental consequences resulting from industrial, municipal, and commercial operations or the execution of federal, state, local and tribal programs and policies.”

A disproportionately high and adverse effect on a minority or low-income population means an adverse effect that:

1. is predominately borne by a minority population and/or low-income population, or
2. will be suffered by the minority population and/or low-income population and is appreciably more severe or greater in magnitude than the adverse effect that will be suffered by the non-minority population and/or non-low-income population.

## 2.1 Definitions

USDOT Order 5610.2 on EJ, issued in the April 15, 1997 Federal Register defines what constitutes low income and minority populations.

- Low-Income is defined as a person whose median household income is at or below the U.S. Department of Health and Human Services poverty guidelines.
- Minority is defined as a person who is: (1) Black (a person having origins in any black racial groups of Africa); (2) Hispanic (a person of Mexican, Puerto Rican, Cuban, Central or South American, or other Spanish culture or origin, regardless of race); (3) Asian American (a person having origins in any of the original peoples of the Far East, Southeast Asia, the Indian subcontinent, or the Pacific Islands); or (4) American Indian and Alaskan Native (a person having origins in any of the original people of North America and who maintains cultural identification through tribal affiliation or community recognition).

- Low-Income Population is defined as any readily identifiable group of low-income persons who live in geographic proximity, and, if circumstances warrant geographically dispersed/transient persons who will be similarly affected by a proposed program, policy or activity.
- Minority Population is defined as any readily identifiable group of minority persons who live in geographic proximity, and if circumstances warrant, geographically dispersed/transient persons who will be similarly affected by a proposed program, policy or activity.

EO 12898 and U.S. DOT Order 5610.2 do not address consideration of the elderly population. However, the U.S. DOT encourages the study of these populations in EJ discussions and in accordance with EJ, Title VI of the Civil Rights Act of 1964 and the Kentucky Transportation Cabinet’s advocacy of inclusive public involvement and equal treatment of all persons this study includes statistics for persons age 65+ that are within the study and comparison areas.

### **3.0 Methodology**

For this study, data was collected by using the method outlined by the KYTC document, “Methodology for Assessing Potential Environmental Justice Concerns for KYTC Planning Studies”.

The primary sources of data were the US Census Bureau, Kentucky State Data Center, local elected officials, community leaders, and field observations. Statistics were collected to present a detailed analysis of the community conditions for the Heartland Parkway study area.

### **4.0 Census Data Analysis**

The U.S. Census Bureau defines geographical units as:

- Census Tract (CT) – “A small, relatively permanent statistical subdivision of a county or statistically equivalent entity delineated for data presentation purposes by a local group of census data users or the geographic staff of a regional census center in accordance with Census Bureau guidelines. CTs generally contain between 1,000 and 8,000 people. CT boundaries are delineated with the intention of being stable over many decades, so they generally follow relatively permanent visible features. They may also follow governmental unit boundaries and other invisible features in some instances; the boundary of a state or county is always a census tract boundary.”

- Block Group (BG) - “A statistical subdivision of a CT. A BG consists of all tabulation blocks whose numbers begin with the same digit in a CT. BGs generally contain between 300 and 3,000 people, with an optimum size of 1,500 people.”
- Census Block (CB) – “An area bounded on all sides by visible and/or invisible features shown on a map prepared by the Census Bureau. A CB is the smallest geographic entity for which the Census Bureau tabulates decennial census data.”

## 5.0 Study Findings/Study Area

This Environmental Justice and Community Impact Report should be utilized as a component of the planning study being conducted by Kentucky Transportation Cabinet’s Division of Planning, for a potential new route and/or reconstruction of segments of the proposed project known as the Heartland Parkway, from the Louie B. Nunn Cumberland Parkway to the Martha L. Collins Blue Grass Parkway. This study is intended to help define the location and purpose of the project and meet federal requirements regarding consideration of environmental issues as defined in the National Environmental Policy Act (NEPA).

### 5.1 Northern Corridor (Figure 5.1)

The Northern Corridor study area includes seven Census Tracts and fifteen different Block Groups. Detailed data of Census Tracts and Block Groups are located in *Appendix D* of this document. The Northern Corridor Census Tracts and Block Groups are listed below. (*Appendix C* includes maps)

#### Marion County:

Tract: 9702	Tract: 9703	Tract: 9705
BG: 1,2,3 & 4	BG: 1	BG: 2

Tract: 9707  
BG: 1 & 4

#### Washington County:

Tract: 9801	Tract: 9802	Tract: 9803
BG: 1 & 2	BG: 2, 3, 4, & 5	BG: 1

## 5.2 Southern Corridor (Figure 5.2)

The Southern Corridor portion of the study area contains thirty-one Block Groups within ten Census Tracts. This section of corridor includes three counties: Adair, Green and Taylor. Tables located in *Appendix D* reflect data analyzed for these counties in the study area. The Southern Corridor Census Tracts and Block Groups are listed below. (*Appendix C* includes maps)

### Adair County:

Tract: 9702	Tract: 9704	Tract: 9705
BG: 1	BG: 1, 2, 3, 4, 5, & 6	BG: 1 & 2

### Green County:

Tract: 9902	Tract: 9904
BG: 1 & 4	BG: 1

### Taylor County:

Tract: 9801	Tract: 9802	Tract: 9803	Tract: 9804
BG: 2	BG: 1, 2, & 3	BG: 1, 2, 3, & 4	BG: 1, 2, 3, & 4

Tract: 9805  
BG: 1, 2, 3, 4, 5, 6 & 7

## 6.0 Study Findings / Population by Race

Census Tracts and block groups were reviewed to determine if any significant minority populations in the study area could potentially be impacted by the proposed project. The comparison between the United States, Kentucky, and five counties within the study area has been assessed below. According to the U.S. Census 2000, Kentucky has 15.6 percent higher population of whites living within the Commonwealth than the national average of 75.0 percent. (See Figure 6.0)

### 6.1 Adair County (Figure 6.1)

The defined study area in Adair County encompasses portions of the following Census Tracts: 9702, 9704, and 9705. The following is a compilation of pertinent information related to the Environmental Justice Concerns. LCADD Staff met with local officials and community members to review maps and Census data related to the study. The intent of these discussions was to confirm previous conclusions and solicit input into the process of developing the Environmental Justice Report.

The majority of Census Tracts and Block Groups in the study area contain minority populations that are considerably less than the national, state, and



county averages. However, there are a few particular Block Groups in the study area that warrant further discussion.

As indicated in Figure 6.1 Census Tract 9704 has a percentage of Black population of 5.8 percent, which exceeds the county average of 2.8 percent, but is considerably less than the national and is comparable with state averages. Block Group 4 in Tract 9704 contains a percentage of Black population of 17.1 percent. Block Group 5 in Tract 9704 contains a percentage of Black population of 9.5 percent. Block Group 2 in Tract 9704 contains a percentage of Black population of 7.7 percent. Block Group 3 in Tract 9704 contains a percentage of Black population of 4.39 percent. Other Block Groups in Tract 9704 located in the study area have percentages well below the county average. Although the percentage of black population in Block Group 2 and Block Group 3 are higher, the county is comparable with or below the state averages. Block Group 4 and Block Group 5 are entirely within the city limits of Columbia. Reconstruction of the existing road or construction of a bypass around the City of Columbia would have no adverse affect on the minority population.

Meetings with local officials and community members resulted in the conclusion that additional concentrations of minorities are not located in the study area; therefore, it is anticipated that the implementation of this project would not have a disproportionate effect on minorities residing in the proposed study area.

## **6.2 Green County (Figure 6.2)**

The defined study area within Green County encompasses portions of the following Census Tracts: 9902 and 9904. The population by race percentages for Green County is comparable to those of the counties in the study area and considerably lower than the national and state averages. Based on the census data, there appears to be no concentrations of minorities in this specific study area.

## **6.3 Taylor County (Figure 6.3)**

The defined study area within Taylor County encompasses portions of the following Census Tracts: 9801, 9802, 9803, 9804, and 9805. Taylor County's population by race percentages are lower than the national and state averages. However, there is one Census Tract and a few particular Block Groups in the study area that warrant further discussion.

Track 9805, indicates higher percentages of minority populations than the state. However, the track is lower percentages compared to national levels. Upon review and discussion with local community members, the higher concentration occurs in three out of six Block Groups: Block Group 1, Block Group 2, and Block Group 3. There is a concentration of Black population in Block Group 2 of 36.6 percent, which is higher than the remainder of Census Tract 9805. Also areas of

Block Group 1 and Block Group 3 that are adjacent to Block Group 2 show similar levels. These Block Groups are located within the older sections of the City of Campbellsville.

The reconstruction of the existing route or the construction of the Bypass around the south east side of the City of Campbellsville should not have an adverse affect upon the minority concentration if constructed in the area it is currently planned.

#### **6.4 Marion County (Figure 6.4)**

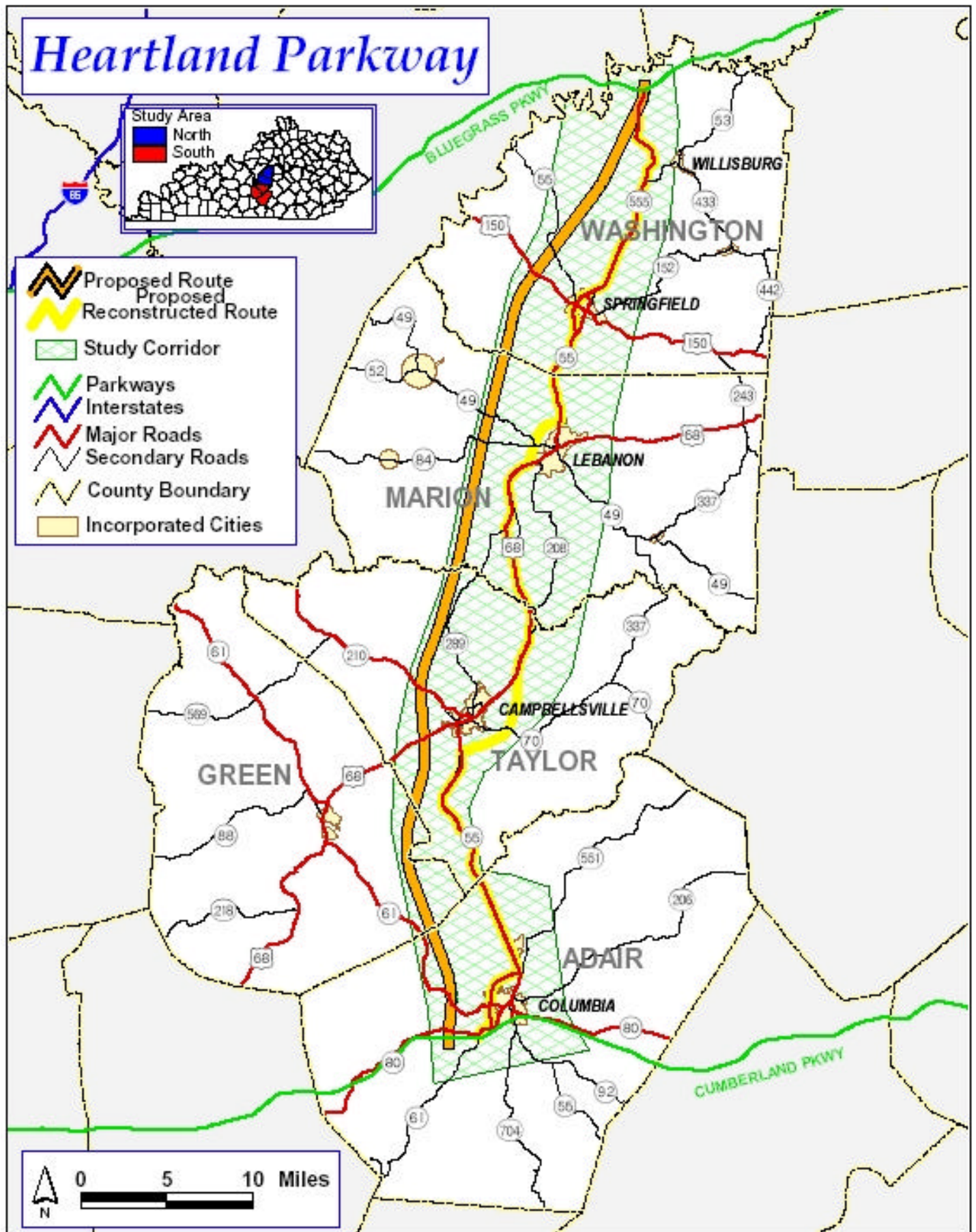
Figure 6.4 indicates that Marion County is comparable to the state average of minority population containing 90.2 percent white inhabitants. However, two Census Tracts contain elevated percentages of minorities that are Black. Census Tract 9702 is 17.1 percent, and is considerably higher than the state level of 7.3 percent. Block Groups in this tract that show significantly higher percentages include: Block Groups 1, 2, 3, & 4. Census Block Group 1 (City of Lebanon, northwest section) is 21.7 percent black and is 9.5 percent higher than the national average. Block Group 2, 3, & 4 (City of Lebanon) are approximately 16.2 percent minority and are potential high percentages. Consultation with local officials and community members confirm that high percentages are normal levels for the study area. Census Tract 9703 (St. Mary Community) also indicates high minority percentages. Block Group 1 (Frogtown Road) shows a high percentage of Blacks inhabiting this rural community. The project should not displace this or any other minority communities in the study area.

#### **6.5 Washington County (Figure 6.5)**

Figure 6.5 indicates that 91.9 percent of the inhabitants of Washington County are white. The highest percentages of minorities in Washington County occur in Tract 9802, which includes the City of Springfield. The Tract contains higher percentages of residence of black descent when compared to the other Tracts. Discussions with the local officials and community members confirm, that most minorities live in or around the city limits. No minorities will be impacted by the proposed project. Findings conclude no concentrations of minority population are present in the study area.

### **7.0 Study Findings / Population by Poverty Level**

It is evident that a high percentage of population below poverty level is a universal issue that occurs throughout the entire Commonwealth, as well as other counties in this study area. The chance of encountering significant concentrations of populations falling under this distinction is very likely. It should also be noted that these percentages are comparable to many surrounding counties in this particular section of Kentucky. All of the counties within this study area are often identified as economically distressed due to high



unemployment rates and the unavailability of quality employment opportunities. The proposed connector route is viewed by many local officials and community members as a project that could potentially be beneficial for further economic growth and development; thereby improving conditions for the residents that currently live below poverty levels. (See Figure 7.0)

### **7.1 Adair County** (Figure 7.1)

The percentage of the population below poverty level for Adair County and all Census Tracts in the study area significantly exceeds state and national averages. Percentages of population below the poverty level in these Tracts range from a low of 18.1 percent to a high of 27.3 percent. A review of additional data shows that all Block Groups in the study area exceed the state and national averages for the percentage of population below the poverty level, and these percentages range from 17.5 percent to 29.7 percent. The State average is 15.4 percent and the national average is 12.1 percent. No concentration of poverty populations will be adversely impacted by the proposed project.

### **7.2 Green County** (Figure 7.2)

The defined study area within Green County encompasses portions of the following Census Tracts: 9902, 9904. The percentage of the population below poverty level for the census tracts in Green County is also significantly higher than national average. Percentages in the Green County Tracts range from a low of 14.7 percent to a high of 19.8 percent. A review of Block Group 1 and Block Group 4 in Census Tract 9902, and Block Group 1 in Census Tract 9904, which are in or near the study area, shows poverty levels below the state and national average. Therefore, the proposed parkway route would have no adverse affect to the percentage of the population below the poverty level. The proposed parkway route could potentially be beneficial for further economic growth and development; thereby improving conditions for the population of the county that currently is declared below poverty level. Following the selection of a preferred alternate for this proposed roadway, LCADD Staff recommends that a subsequent review of poverty data within affected Census divisions be undertaken to determine if particular concentrations of population below the poverty level exist in the project area; and if so, proactive measures be undertaken to insure that these groups are not disproportionately affected by the project.

### **7.3 Taylor County** (Figure 7.3)

The defined study area within Taylor County encompasses portions of the following Census Tracts: 9801, 9802, 9803, 9804, and 9805. Three of the five Census Tracts within the study area are comparable or below the state and national average, Census Tracts: 9801, 9803, and 9804. However, there are block groups in those tracts that are higher than the state and national averages. They include Block Group 3, and Block Group 4, of Census Tract 9803, and

Block Group 2, and Block Group 3 of Census Tract 9804. Both Tracts remain consistent with other percentages in the region.

Census Tract 9802 has a higher percentage for the population below poverty level than the state or national average. Upon further analysis, Block Group 2 is the only Block Group in of Census Tract 9802 in the study area. The Block Group is 19.5 percent of population below poverty level.

Census Tract 9805 has the highest percentage of the population below poverty level in the Taylor County study area at 24.8 percent. That percent is double the national average. Block Group 1, Block Group 4, Block Group 6, and Block Group 7, range from a low of 13.0 percent to a high of 24.5 percent and is comparable to the state and regional averages. Block Group 2, 38.1 percent and Block Group 3, 51.6 percent has a high average of population below poverty level. Although higher than the state and nation, these levels are comparable to the entire study area and the percentages of all the Block Groups.

Again, upon the selection of a preferred alternate for this proposed roadway, a subsequent review of poverty data within the affected census tracts should be undertaken to determine if particular concentrations of population might be adversely affected.

#### **7.4 Marion County (Figure 7.4)**

Figure 7.4 indicates the population residing in Marion County is 26.1 percent below poverty level. Percentages at state and national levels remain lower. Poverty levels in Marion County reflect those across the Commonwealth. Tract 9702 has 23.6 percent of the total population below poverty. In this Tract, Block Group 1 has 53.6 percent of the population below poverty levels. This Block Group is located on the northeast side of downtown Lebanon and has been identified as mainly local businesses. Block Group 2 has 21.2 percent below poverty levels. This Block Group is also located within the City of Lebanon boundaries. The population in Census Tracts 9707 is 20.2 percent below poverty level. Block Group 1 is 32.6 percent below poverty. Consultations with local officials and community members confirm that significant portions of the populations in Marion County live in rural areas on farms. No concentration of poverty populations will be adversely impacted by the proposed project.

#### **7.5 Washington County (Figure 7.5)**

Figure 7.5 indicates the population in Washington County is 23.5 percent below the poverty level. When compared to state and national averages this percentage is potentially high. Poverty levels in Washington County are comparable to those across the Commonwealth. Block Groups 3 and 5 in Census Tract 9802 show elevated percentages when compared to other county levels. These Block Groups are located within the City of Springfield. No

concentrations of population below poverty level have been identified while researching and preparing this report.

## **8.0 Study Findings / Population by Age**

Census Tracts and block groups were analyzed to determine if any, significant segments of the population sixty-five or older are concentrated in the study area. The comparison between the United States, Kentucky, and five counties within the study area has been determined below. According to the U.S. Census 2000, 12.4 percent of the population in the United States is age sixty-five or older. The Kentucky percentage of the population age sixty-five or older is 12.5 percent. (See Figure 8.0)

### **8.1 Adair County (Figure 8.1)**

The defined study area within Adair County encompasses portions of the following Census Tracts: 9702, 9704, and 9705. Adair County percentages for the population by age are similar to those of surrounding counties, the state and nation. The Census Tracts are also comparable. The data indicates potential concentrations in Census Tract 9704. The city of Columbia is within this Census Tract. Census Tract 9704, Block Group 4 of 39.1 percent has a high percentage of population 65 and over. This is much higher than the Census Tract percentage of 17.4. Adair County's aging population is 14.6 percent and comparable to the state 12.5 percent and the nation 12.4 percent. Local officials and community members explained that high percentages are mainly the result of Summitt Manor Nursing Home that is not impacted by the proposed project. This concentration of aging populations will not be adversely impacted by the proposed project

### **8.2 Green County (Figure 8.2)**

The defined study area within Green County encompasses portions of the following Census Tracts: 9902 and 9904. Census Tract 9902 Block Group 4 has 25.6 percent age 65 or older, an elevated average compared to state and national levels. This concentration of aging populations will not be adversely impacted by the proposed project

### **8.3 Taylor County (Figure 8.3)**

The defined study area within Taylor County encompasses portions of the following Census Tracts: 9801, 9802, 9803, 9804 and 9805. Most Census Tracts are comparable to state and national averages. However, there are some elevated percentages of groups age 65 and over in three Census Tracts; Census Tract 9803 Block Group 3, Census Tract 9804 Block Group 2 and Census Tract 9805 Block Group 2 indicate elevated averages. Census Tract 9803 Block

Group 4 shows potential higher levels of aging population, 23.0 percent. This Census Tract is located between Census Tract 9803 Block Group 3, which is 33.3 percent, and Census Tract 9805 Block Group 2, which is 31.9 percent. Another tract that indicates elevated levels is Census Tract 9805 Block Group 7, which is 26.6 percent. Census Tract 9804 Block Group 2 is 21.3 percent. After discussions with other community members, it appears that the higher percentages are the result of older sections of the City of Campbellsville. Reconstruction of KY 55 or the Campbellsville Bypass should have no effect on this age group.

#### **8.4 Marion County (Figure 8.4)**

Figure 8.4 indicates that Census Tracts in Marion County contain comparable percentages of an aging population to state and national levels. However, Tract 9702 in Marion County contains a higher percentage of aged population than state and national percentiles. Block Group 1 contains 27.3 percent compared to the 12.5 percent state and 12.4 percent national level. Block Group 2 is 22.6 percent and is considered to be at elevated levels when compared to other block groups. Block Group 3 shows that 14.6 percent of the population is sixty-five or over and is a comparable average. Further examination of the area confirmed the higher levels of aged population are the result of nursing home facilities or rural/family owned farms located within the Census Tracts. No concentration of aging populations will be adversely impacted by the proposed project.

#### **8.5 Washington County (Figure 8.5)**

Figure 8.5 indicates that Washington County has a higher percentage of aging population sixty-five or older than state and national averages. Closer review reveals that Washington County contains considerably higher percentages of elderly population compared to Kentucky and the United State levels. Census Tract 9802 indicates 17.2 percent of population residing there is elderly. This is compared to a 12.5 percent state and 12.4 percent national average. Several block groups contain higher percentages when compared to state and national levels. Block Group 3, 25.5 percent and Block Group 4, 24.0 percent are potential high percentiles of aging population when compared to other Tracts. Consultation with local officials and community members has confirmed that high percentages of aging are the result of Nursing home facilities located in the area. No concentration of aging populations will be adversely impacted by the proposed project.

### **9.0 Conclusion**

#### **Northern Corridor**

Potential concentrations of minority populations were identified during the assessment of the study area. Data indicates Census Tracts encompassing the Frogtown Road location shows potential high percentages of Blacks inhabiting

this area. Consultations with community members and local officials confirm the data. The proximity of the community to the proposed project shows no elevated impact to inhabitants of the area.

Data indicate many of the counties in the study area suffer from high levels of poverty. Marion and Washington Counties are no exception to the issue of concentration of low-income residents. Both counties have over twenty percent of the population below the state and national poverty level averages. Farmlands and rural areas in these counties are common factors. High poverty percentages in the urban areas are the probable result of the sparse number of residents in and outside city limits. Currently, no elevated concentrations were identified as the result of this report.

Concentrations of Aging population identified in Marion and Washington Counties were confirmed as the result of aging facilities and family farms located in the study area. Many of the Block Groups discussed are contained within different city boundaries. These Census Tracts consist mainly of local businesses, with a small numbers of residents living in the area. No significant portions of aging populations were identified as a result of the Environmental Justice analysis of the study area.

### **Southern Corridor**

Based on data obtained from the U.S. Census Bureau for income, race and age, discussions with local officials and field observations; it appears there is a small concentration of populations over 65 years of age in Adair and Taylor counties. The concentrations identified in Adair and Taylor counties should not be affected by a new route considering their proximity and previous discussions about possible routes. The elevated percentages in the populations below poverty level might be indicative of concentrations throughout the study area. However, based on the economic status of these rural depressed counties, these percentages are not uncommon for this area. Analysis of the minority population data showed several of the block groups as having an identified concentration of some sort. The more elevated concentrations identified were noted in the narrative analysis of that county.



# **Appendix      A.**

Planning Study Contact List

## **Northern Corridor Contacts List**

David R. Hourigan  
Marion County Judge / Executive  
102 West Main Street  
Lebanon, KY 40033  
270-692-3451

John Thomas  
City Manager / Zoning Administrator  
City of Lebanon  
P. O. Box 840  
Lebanon, KY 40033  
270-692-6272

Jodie Mann  
Marion County, Health Dept.  
516 N. Spalding Ave.  
Lebanon, KY 40033  
270-692-3393

John Settles  
Washington County Judge / Executive  
P.O. Box 126  
Springfield, KY 40069  
859-336-5410

Mary Anne Jones  
Washington County, Health Dept.  
302 E. Main  
Springfield, KY 40069  
859-336-3989

Jeff Godd  
Environmental Services  
Washington County, Health Dept.  
302 E. Main  
Springfield, KY 40069  
859-336-3989

Angela Nance  
City of Lebanon, Citizen  
P.O. Box 840  
Lebanon, KY 40033

## **Southern Corridor Contact List**

Mr. Ken Keltner  
1002 East Broadway  
Campbellsville, KY 42718

Mr. Eddie Bailey  
2126 Gabe Road  
Greensburg, KY 42743

Mr. David R. Milby  
379 V.D. Milby Road  
Greensburg, KY 42743

Mr. Willard Smith  
323 High Street  
Campbellsville, KY 42718

Commander Jeff Hancock  
Kentucky State Police, Post 15  
P.O. Box 160  
Columbia, KY 42728

Mayor Curtis Hardwick  
City of Columbia  
116 Campbellsville Street  
Columbia, KY 42728

Mayor Lisle Cheatham  
City of Greensburg  
105 West Hodgenville Avenue  
Greensburg, KY 42743

Mayor Brenda Allen  
City of Campbellsville  
100 Cherry St., Municipal Bldg.  
Campbellsville, KY 42718

Honorable Jerry Vaughn  
Adair County Judge Executive  
424 Public Square, Suite 1  
Columbia, KY 42728

Honorable Paul Patton  
Taylor County Judge Executive  
Taylor County Courthouse  
Campbellsville, KY 42718

Honorable Mary Ann Blaydes Baron  
Green County Judge Executive  
Green County Courthouse  
Greensburg, KY 42743

## **Appendix B.**

Methodology for Assessing Potential Environmental Justice

# **Methodology for Assessing Potential Environmental Justice Concerns for KYTC Planning Studies**

Updated: February 1, 2002

The demographics of the affected area should be defined using U.S. Census data (Census tracts and block groups) and the percentages for minorities, low-income, elderly, or disabled populations should be compared to those for the following:

- Other nearby Census tracts and block groups,
- The county as a whole,
- The entire state, and
- The United States.

Information from PVA offices, social service agencies, local health organizations, local public agencies, and community action agencies can be used to supplement the Census data. Specifically, we are interested in obtaining the following information:

- Identification of community leaders or other contacts who may be able to represent these population groups and through which coordination efforts can be made.
- Comparison of the Census tracts and block groups encompassing the project area to other nearby Census tracts and block groups, county, state, and United States percentages.
- Locations of specific or identified minority, low-income, elderly, or disabled population groups within or near the project area. This may require some field reviews and/or discussions with knowledgeable persons to identify locations of public housing, minority communities, ethnic communities, etc., to verify Census data or identify changes that may have occurred since the last Census. Examples would be changes due to new residential developments in the area or increases in Asian and/or Hispanic populations.
- Concentrations or communities that share a common religious, cultural, ethnic, or other background, e.g., Amish communities.
- Communities or neighborhoods that exhibit a high degree of community cohesion or interaction and the ability to mobilize community actions at the start of community involvement.
- Concentrations of common employment, religious centers, and/or educational institutions with members within walking distance of facilities.
- potential effects, both positive and negative, of the project on the affected groups as compared to the non-target groups. This may include, but are not limited to:
  1. Access to services, employment or transportation.
  2. Displacement of persons, businesses, farms, or non-profit organizations.
  3. Disruption of community cohesion or vitality.
  4. Effects to human health and/or safety.

- Possible methods to minimize or avoid impacts on the target population groups.

If percentages of these populations are elevated within the project area, it should be brought to the attention of the Division of Planning immediately so that coordination with affected populations may be conducted to determine the affected population's concerns and comments on the project. Also, with this effort, representatives of minority, elderly, low-income, or disabled populations should be identified so that, together, we can build a partnership for the region that may be incorporated into other projects. Also, we hope to build a Commonwealth-wide database of contacts. We are available to participate in any meetings with these affected populations or with their community leaders or representatives.

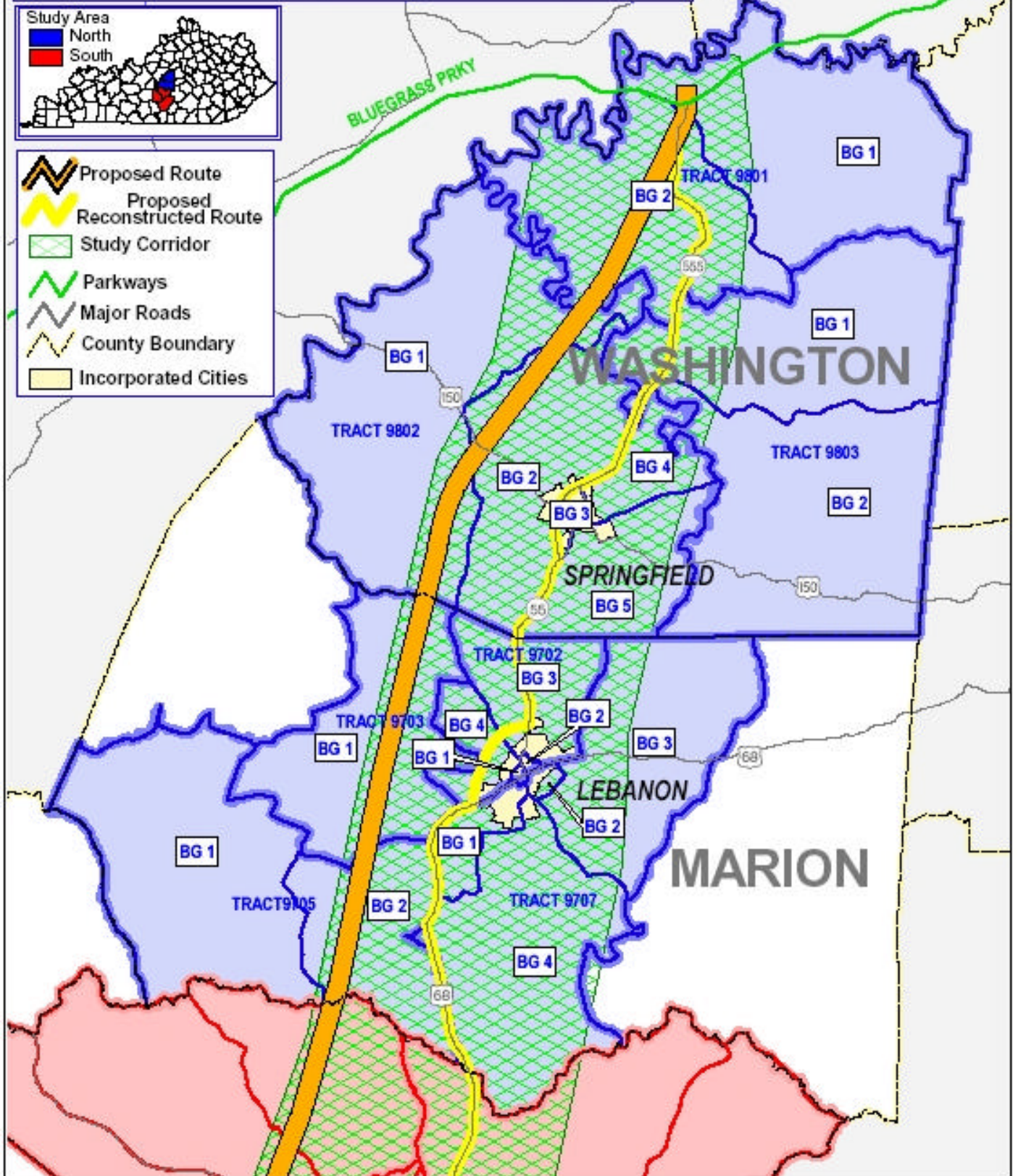
In identifying communities, agencies may consider as a community either a group of individuals living in geographic proximity to one another, or a geographically dispersed/transient set of individuals (such as migrant workers or Native Americans), where either type of group experiences common conditions of environmental exposure or effect. The selection of the appropriate unit of analysis may be a governing body's jurisdiction, a neighborhood, census tract, or other similar unit that is to be chosen so as not to artificially dilute or inflate the affected population. A target population also exists if there is (1) more than one minority or other group present and (2) the percentages, as calculated by aggregating all minority persons, exceed that of the general population or other appropriate unit of geographic analysis.

Maps should be included that show the Census tracts and block groups included in the analysis as well as the relation of the project area to those Census tracts and block groups.

## **Appendix C.**

Census Tracts and Block Groups (Maps)

# Heartland Parkway - Northern Study Area



LTADD20041110

Census Tracts **TRACT 9802**

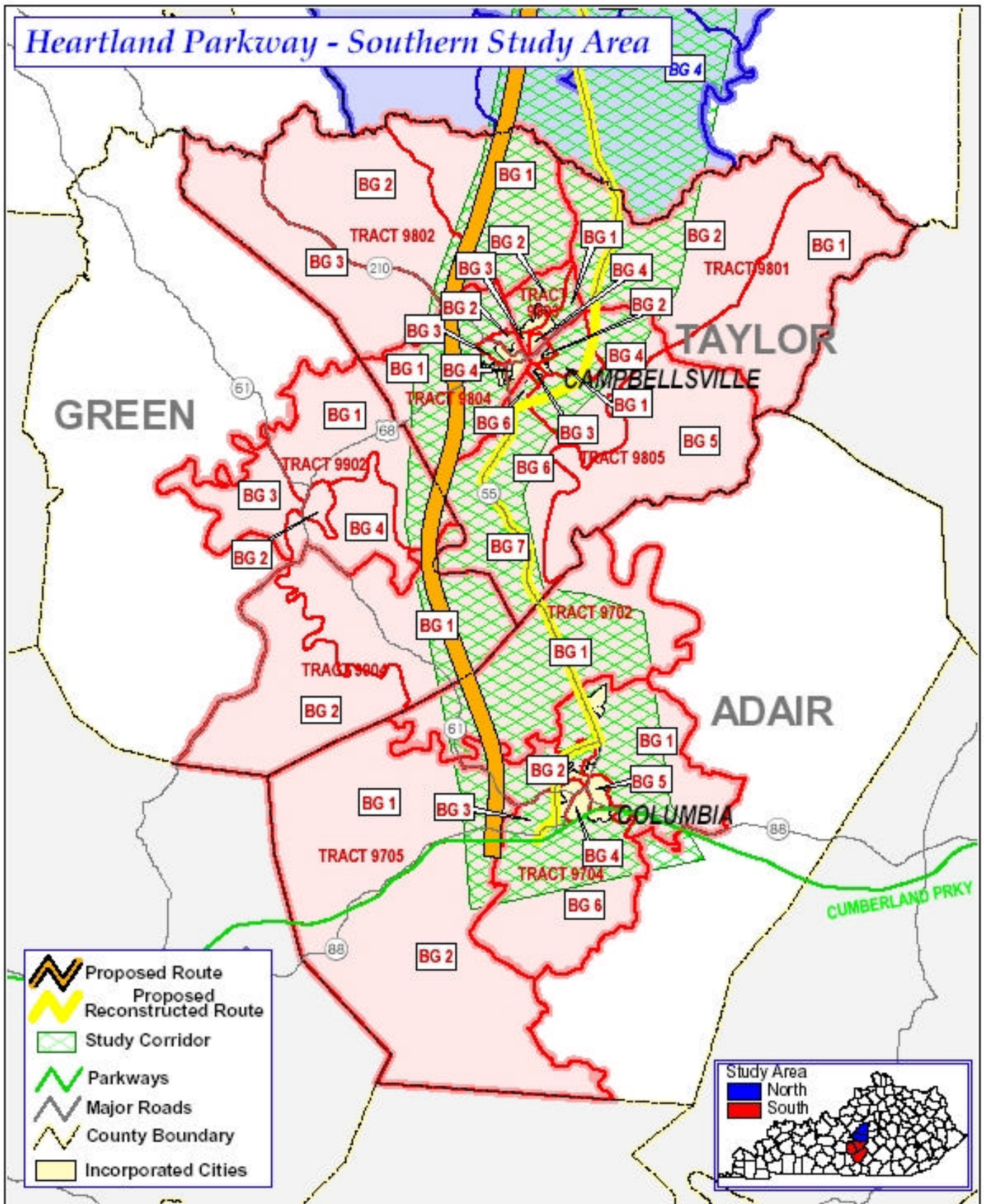
North  
South

Census Block Groups **BG 1**

North  
South

Figure 5.1





LTADD20041110

Census Tracts **TRACT 9802**

North  
South

Census Block Groups **BG 1**

North  
South

Figure 5.2

## **Appendix D.**

Census Tracts and Block Groups (Tables)

## Comparison Table for 2000 Population By Race: Nation, State, County, City

Figure 6.0

	White	% of Total Pop	Black	% of Total Pop	America Indian	% of Total Pop	Asian	% of Total Pop	Hispanic	% of Total Pop	Other	% of Total Pop	Total Pop.
<b>United States</b>	211,353,725	75.00%	34,361,740	12.2%	2,447,989	0.9%	10,171,820	3.6%	35,238,481	12.5%	15,436,924	5.5%	281,421,906
<b>Kentucky</b>	3,639,725	90.60%	293,915	7.3%	9,080	0.2%	28,994	0.7%	56,414	1.4%	22,116	0.5%	4,041,769
<b>Adair County</b>	16,573	96.11%	479	2.8%	0	0.0%	27	0.2%	103	0.6%	23	0.1%	17,244
<b>Green County</b>	11,168	96.96%	228	2.0%	9	0.1%	49	0.4%	47	0.4%	10	0.1%	11,518
<b>Taylor County</b>	21,436	93.50%	1,200	5.2%	15	0.1%	20	0.1%	175	0.8%	90	0.4%	22,927
<b>Marion County</b>	16,240	90.2%	1,661	9.2%	17	0.1%	80	0.4%	144	0.8%	87	0.5%	18,062
<b>Washington County</b>	9,892	91.9%	820	7.6%	17	0.2%	31	0.3%	175	1.6%	74	0.7%	10,827

Figure 6.1

	White	% of Total Pop	Black	% of Total Pop	America Indian	% of Total Pop	Asian	% of Total Pop	Hispanic	% of Total Pop	Other	% of Total Pop	Total Pop.
<b>Adair County</b>	16,573	96.1%	479	2.8%	0	0.0%	27	0.2%	103	0.6%	23	0.1%	17,244
TRACT 9702	1,493	99.0%	9	0.6%	0	0.0%	0	0.0%	0	0.0%	0	0.0%	1,508
Block Grp. 1	1,493	99.0%	9	0.6%	0	0.0%	0	0.0%	0	0.0%	0	0.0%	1,508
TRACT 9704	6,997	92.9%	434	5.8%	0	0.0%	13	0.2%	81	10.8%	6	0.1%	7,530
Block Grp. 1	2,083	98.5%	18	0.7%	0	0.0%	0	0.0%	29	1.4%	6	0.3%	2,114
Block Grp. 2	886	90.7%	75	7.7%	0	0.0%	0	0.0%	10	1.0%	0	0.0%	977
Block Grp. 3	1,066	95.6%	49	4.4%	0	0.0%	0	0.0%	0	0.0%	0	0.0%	1,115
Block Grp. 4	688	80.4%	146	17.1%	0	0.0%	4	0.5%	19	2.2%	0	0.0%	856
Block Grp. 5	1,371	89.3%	146	9.5%	0	0.0%	9	0.6%	23	1.5%	0	0.0%	1,536
Block Grp. 6	903	96.9%	0	0.0%	0	0.0%	0	0.0%	0	0.0%	0	0.0%	932
TRACT 9705	2,358	98.5%	11	0.5%	0	0.0%	14	0.6%	0	0.0%	0	0.0%	2,395
Block Grp. 1	1,230	98.9%	0	0.0%	0	0.0%	14	1.1%	0	0.0%	0	0.0%	1,244
Block Grp. 2	1,128	98.0%	11	1.0%	0	0.0%	0	0.0%	0	0.0%	0	0.0%	1,151

## Comparison Table for 2000 Population By Race: Nation, State, County, City

Figure 6.2

	White	% of Total Pop	Black	% of Total Pop	America Indian	% of Total Pop	Asian	% of Total Pop	Hispanic	% of Total Pop	Other	% of Total Pop	Total Pop.
<b>Green County</b>	11,168	97.0%	228	2.0%	9	0.1%	49	0.4%	47	0.4%	10	0.1%	11,518
TRACT 9902	4,093	94.1%	156	3.6%	4	0.1%	43	1.0%	47	1.1%	10	0.2%	4,349
Block Grp. 1	1,185	97.7%	24	2.0%	0	0.0%	0	0.0%	22	1.8%	0	0.0%	1,213
Block Grp. 4	740	95.2%	23	3.0%	0	0.0%	4	0.5%	0	0.0%	0	0.0%	777
TRACT 9904	1,668	96.5%	38	2.2%	5	0.3%	6	0.4%	0	0.0%	0	0.0%	1,728
Block Grp. 1	868	94.0%	38	4.1%	0	0.0%	6	0.7%	0	0.0%	0	0.0%	923

Figure 6.3

	White	% of Total Pop	Black	% of Total Pop	America Indian	% of Total Pop	Asian	% of Total Pop	Hispanic	% of Total Pop	Other	% of Total Pop	Total Pop.
<b>Taylor County</b>	21,436	93.5%	1,200	5.2%	15	0.1%	20	0.1%	175	0.8%	90	0.4%	22,927
TRACT 9801	2,298	99.4%	0	0.0%	0	0.0%	0	0.0%	0	0.0%	0	0.0%	2,311
Block Grp. 1	1,620	100%	0	0.0%	0	0.0%	0	0.0%	0	0.0%	0	0.0%	1,620
TRACT 9802	2,873	98.4%	41	1.4%	0	0.0%	0	0.0%	0	0.0%	0	0.0%	2,920
Block Grp. 1	1,535	99.2%	12	0.8%	0	0.0%	0	0.0%	0	0.0%	0	0.0%	1,547
Block Grp. 2	713	95.3%	29	3.9%	0	0.0%	0	0.0%	0	0.0%	0	0.0%	748
Block Grp. 3	625	100%	0	0.0%	0	0.0%	0	0.0%	0	0.0%	0	0.0%	625
TRACT 9803	4,028	93.1%	255	5.9%	0	0.0%	0	0.0%	71	1.6%	42	1.0%	4,325
Block Grp. 1	767	90.6%	80	9.5%	0	0.0%	0	0.0%	27	3.2%	0	0.0%	847
Block Grp. 2	1,708	93.8%	113	6.2%	0	0.0%	0	0.0%	0	0.0%	0	0.0%	1,821
Block Grp. 3	708	96.7%	24	3.3%	0	0.0%	0	0.0%	0	0.0%	0	0.0%	732
Block Grp. 4	845	91.4%	38	4.1%	0	0.0%	0	0.0%	44	4.8%	42	4.5%	925
TRACT 9804	6,482	92.5%	402	5.7%	15	0.2%	20	0.3%	87	1.2%	48	0.7%	7,007
Block Gro. 1	3,266	96.2%	78	2.3%	0	0.0%	0	0.0%	87	2.6%	32	0.9%	3,394
Block Grp. 2	790	91.4%	52	6.0%	0	0.0%	0	0.0%	0	0.0%	0	0.0%	864
Block Grp. 3	1,434	86.1%	195	11.7%	0	0.0%	20	1.2%	0	0.0%	16	1.2%	1,665
Block Grp. 4	992	91.5%	77	7.1%	15	1.4%	0	0.0%	0	0.0%	0	0.0%	1,084
TRACT 9805	5,755	90.4%	502	7.9%	0	0.0%	0	0.0%	7	0.1%	0	0.0%	6,364
Block Grp. 1	806	90.4%	85	9.5%	0	0.0%	0	0.0%	0	0.0%	0	0.0%	891
Block Grp. 2	414	63.4%	239	36.6%	0	0.0%	0	0.0%	0	0.0%	0	0.0%	653
Block Grp. 3	808	79.9%	178	17.6%	0	0.0%	0	0.0%	7	0.7%	0	0.0%	1,011
Block Grp. 4	1,434	100%	0	0.0%	0	0.0%	0	0.0%	0	0.0%	0	0.0%	1,434
Block Grp. 6	914	93.7%	0	0.0%	0	0.0%	0	0.0%	0	0.0%	0	0.0%	975
Block Grp. 7	693	100%	0	0.0%	0	0.0%	0	0.0%	0	0.0%	0	0.0%	693

Source: US Census Bureau, 2000 Census

## Comparison Table for 2000 Population By Race: Nation, State, County, City

Figure 6.4

	White	% of Total Pop.	Black	% of Total Pop.	American Indian	% of Total Pop.	Asian	% of Total Pop.	Hispanic	% of Total Pop.	Other	% of Total Pop.	Total Pop.
<b>Marion County</b>	16,240	90.2%	1,661	9.2%	17	0.1%	80	0.4%	144	0.8%	87	0.5%	18,062
TRACT 9702	3,473	81.1%	731	17.1%	3	0.1%	17	0.4%	31	0.7%	16	0.4%	4,281
Block GRP. 1	499	76.4%	142	21.7%	1	0.2%	1	0.2%	9	1.4%	4	0.6%	653
Block Grp. 2	581	82.8%	114	16.2%	0	0.0%	2	0.3%	6	0.9%	3	0.4%	702
Block Grp. 3	1,184	81.5%	235	16.2%	2	0.1%	4	0.3%	10	0.7%	6	0.4%	1,453
Block Grp. 4	1,209	82.1%	240	16.3%	0	0.0%	10	0.7%	6	0.4%	3	0.2%	1,473
TRACT 9703	2,112	82.7%	417	16.3%	2	0.1%	1	0.0%	17	0.7%	6	0.2%	2,553
Block Grp. 1	2,112	82.7%	417	16.3%	2	0.1%	1	0.0%	17	0.7%	6	0.2%	2,553
TRACT 9705	1,641	98.7%	12	0.7%	0	0.0%	2	0.1%	8	0.5%	3	0.2%	1,663
Block Grp. 2	685	98.3%	10	1.4%	0	0.0%	1	0.1%	1	0.1%	0	0.0%	697
TRACT 9707	4,336	87.6%	483	9.8%	9	0.2%	53	1.1%	42	0.8%	16	0.3%	4,950
Block Grp. 1	1,067	83.5%	154	12.1%	4	0.3%	27	2.1%	23	1.8%	10	0.8%	1,278
Block Grp. 4	1,564	97.9%	5	0.3%	5	0.3%	13	0.8%	3	0.2%	0	0.0%	1,598

Figure 6.5

	White	% of Total Pop.	Black	% of Total Pop.	American Indian	% of Total Pop.	Asian	% of Total Pop.	Hispanic	% of Total Pop.	Other	% of Total Pop.	Total Pop.
<b>Washington County</b>	9,892	91.9%	820	7.6%	17	0.2%	31	0.3%	175	1.6%	74	0.7%	10,827
TRACT 9801	2,608	98.0%	23	0.9%	8	0.3%	5	0.2%	30	1.1%	8	0.3%	2,660
Block Grp. 1	1,087	98.6%	2	0.2%	7	0.6%	4	0.4%	7	0.6%	0	0.0%	1,102
Block Grp. 2	1,521	97.6%	21	1.3%	1	0.1%	1	0.1%	23	1.5%	8	0.5%	1,558
TRACT 9802	5,248	84.7%	787	12.7%	8	0.1%	26	0.4%	128	2.1%	58	0.9%	6,195
Block Grp. 2	1,246	87.5%	142	10.0%	8	0.6%	8	0.6%	26	1.8%	16	1.1%	1,424
Block Grp. 3	841	88.3%	73	7.7%	0	0.0%	4	0.4%	9	0.9%	12	1.3%	952
Block Grp. 4	763	72.2%	269	25.4%	0	0.0%	10	0.9%	7	0.7%	4	0.4%	1,057
Block Grp. 5	873	72.1%	297	24.5%	0	0.0%	2	0.2%	66	5.5%	24	2.0%	1,211
TRACT 9803	2,036	98.8%	10	0.5%	1	0.0%	0	0.0%	17	0.8%	1	0.0%	2,061
Block Grp. 1	948	97.6%	9	0.9%	0	0.0%	0	0.0%	12	1.2%	1	0.1%	971
Block Grp. 2	1,088	99.8%	1	0.1%	1	0.1%	0	0.0%	5	0.5%	0	0.0%	1,090

## Comparison Table for 2000 Population by Poverty Level: Nation, State, County, City

Figure 7.0

Nation, State, County Tracts

	Population Below Poverty Level	% of Pop	Age 0-17 Below Poverty Level	% of Pop	Age 18-64 Below Poverty Level	% of Pop	Age 65 -Over Below Poverty Level	% of Pop	Total Pop.
<b>United States</b>	33,899,812	12.1%	11,746,858	4.2%	18,865,180	6.7%	3,287,774	1.2%	281,421,906
<b>Kentucky</b>	621,096	15.4%	203,547	5.0%	350,072	8.7%	67,477	1.7%	4,041,769
<b>Adair County</b>	3,954	22.9%	1,234	7.2%	2,192	12.7%	528	3.1%	17,244
<b>Green County</b>	2,087	18.1%	602	5.2%	1,137	9.9%	348	3.0%	11,518
<b>Taylor County</b>	3,915	17.1%	1,260	6.0%	2,004	9.5%	621	5.4%	21,146
<b>Marion County</b>	4,749	26.1%	1,163	6.4%	2,998	16.5%	758	4.2%	18,212
<b>Washington County</b>	2,563	23.5%	521	4.8%	1327	12.2%	535	4.9%	10,916

Figure 7.1

Block Group	Population Below Poverty Level	% of Pop	Age 0-17 Below Poverty Level	% of Pop	Age 18-64 Below Poverty Level	% of Pop	Age 65 -Over Below Poverty Level	% of Pop	Total Pop.
<b>Adair County</b>	3,954	22.9%	1,234	7.2%	2,192	12.7%	528	3.1%	17,244
Tract 9702	273	18.1%	71	4.7%	175	11.6%	27	1.8%	1,508
Block Grp. 1	273	18.1%	71	4.7%	175	11.6%	27	1.8%	1,508
Tract 9704	1605	21.3%	517	6.90%	812	10.8%	276	3.7%	7,530
Block Grp. 1	502	23.8%	192	9.10%	249	11.8%	61	2.9%	2,114
Block Grp. 2	241	24.7%	135	1.4%	91	9.3%	15	1.5%	977
Block Grp. 3	213	19.1%	61	5.5%	101	9.1%	51	4.6%	1,115
Block Grp. 4	183	21.4%	48	5.6%	106	1.2%	29	3.4%	856
Block Grp. 5	269	17.5%	65	4.2%	142	9.2%	62	4.0%	1,536
Block Grp. 6	197	21.1%	16	1.7%	123	13.2%	58	6.2%	932
Tract 9705	653	27.3%	207	8.6%	357	14.1%	79	3.3%	2,395
Block Grp. 1	369	29.7%	154	12.4%	176	14.2%	39	31.4%	1,244
Block Grp. 2	284	24.7%	63	5.5%	181	15.7%	40	3.5%	1,151

## Comparison Table for 2000 Population by Poverty Level: Nation, State, County, City

Figure 7.2

Block Group	Population Below Poverty Level	% of Pop	Age 0-17 Below Poverty Level	% of Pop	Age 18-64 Below Poverty Level	% of Pop	Age 65 -Over Below Poverty Level	% of Pop	Total Pop.
<b>Green County</b>	2,087	18.1%	602	5.2%	1,137	9.9%	348	3.0%	11,518
Tract 9902	862	19.8%	254	5.8%	515	11.8%	93	2.1%	4,349
Block Grp. 1	144	11.9%	46	3.8%	88	7.3%	4	0.3%	1,213
Block Grp. 4	59	7.6%	28	3.6%	31	4.0%	0	0.0%	777
Tract 9904	254	14.7%	81	4.7%	127	7.4%	46	2.7%	1,728
Block Grp. 1	102	11.1%	18	2.0%	52	5.6%	32	3.5%	923

Figure 7.3

Block Group	Population Below Poverty Level	% of Pop	Age 0-17 Below Poverty Level	% of Pop	Age 18-64 Below Poverty Level	% of Pop	Age 65 -Over Below Poverty Level	% of Pop	Total Pop.
<b>Taylor County</b>	3,915	17.1%	1,260	6.0%	2,004	9.5%	621	5.4%	21,146
Tract 9801	366	15.8%	93	4.0%	222	9.6%	51	2.2%	2,311
Block Grp. 2	170	10.5%	32	2.0%	116	7.2%	22	1.4%	1,620
Tract 980200	532	18.2%	145	5.0%	282	9.7%	105	3.6%	2,920
Block Grp. 1	234	15.1%	92	6.0%	101	6.5%	41	2.7%	1,547
Block Grp. 2	146	19.5%	40	5.4%	76	10.2%	30	4.0%	748
Block Grp. 3	152	24.3%	13	2.1%	105	16.8%	34	5.4%	625
Tract 9803	518	12.0%	181	4.2%	230	5.3%	107	2.5%	4,325
Block Grp. 1	131	15.5%	72	8.5%	50	5.9%	9	1.1%	847
Block Grp. 2	92	5.1%	26	1.4%	50	2.8%	16	0.9%	1,821
Block Grp. 3	145	19.8%	70	9.6%	48	6.6%	27	3.7%	732
Block Grp. 4	150	16.2%	13	1.4%	82	8.9%	55	6.0%	925
Tract 9804	919	13.1%	245	3.5%	502	7.2%	142	2.0%	7,007
Block Grp. 1	367	10.8%	95	2.8%	219	6.5%	53	1.6%	3,394
Block Grp. 2	182	21.1%	47	5.4%	116	13.4%	19	2.2%	864
Block Grp. 3	283	17.0%	84	5.1%	131	7.9%	38	2.3%	1,665
Block Grp. 4	87	8.0%	19	1.8%	36	3.3%	32	3.0%	1,084
Tract 9805	1580	24.8%	596	9.4%	768	12.1%	216	3.4%	6,364
Block Grp. 1	218	24.5%	80	9.0%	90	10.1%	38	4.3%	891
Block Grp. 2	249	38.1%	74	11.3%	108	16.5%	67	10.3%	653
Block Grp. 3	522	51.6%	248	24.5%	239	23.6%	35	3.5%	1,011
Block Grp. 4	236	16.5%	83	5.8%	137	9.6%	16	1.1%	1,434
Block Grp. 6	163	16.7%	47	7.8%	109	11.2%	7	0.7%	975
Block Grp. 7	80	13.0%	11	1.6%	34	4.9%	45	6.5%	693

Source: US Census Bureau, 2000 Census

## Comparison Table for 2000 Population by Poverty Level: Nation, State, County, City

Figure 7.4

	Population Below Poverty Level	% of Pop.	Age 0-17 Below Poverty Level	% of Pop.	Age 18-64 Below Poverty Level	% of Pop.	Age 65-Over Below Poverty Level	% of Total Pop.	Total Pop.
<b>Marion County</b>	4,749	26.1%	1,163	6.4%	2,998	16.5%	758	4.2%	18,212
TRACT 9702	1,012	23.6%	230	5.4%	533	12.5%	146	3.4%	4,281
Block GRP. 1	350	53.6%	67	10.3%	184	28.2%	51	7.8%	653
Block Grp. 2	149	21.2%	26	3.7%	86	12.3%	26	3.7%	702
Block Grp. 3	311	21.4%	86	5.9%	145	10.0%	47	3.2%	1,453
Block Grp. 4	202	13.7%	51	3.5%	118	8.0%	22	1.5%	1,473
TRACT 9703	131	5.1%	20	0.8%	106	4.2%	0	0.0%	2,553
Block Grp. 1	131	5.1%	20	0.8%	106	4.2%	0	0.0%	2,553
TRACT 9705	158	9.5%	26	1.6%	89	5.4%	29	1.7%	1,663
Block Grp. 2	39	5.6%	0	0.0%	29	4.2%	4	0.6%	697
TRACT 9707	1,001	20.2%	197	4.0%	590	11.9%	99	2.0%	4,950
Block Grp. 1	416	32.6%	103	8.1%	245	19.2%	12	0.9%	1,278
Block Grp. 4	264	16.5%	27	1.7%	172	10.8%	38	2.4%	1,598

Figure 7.5

	Population Below Poverty Level	% of Pop.	Age 0-17 Below Poverty Level	% of Pop.	Age 18-64 Below Poverty Level	% of Pop.	Age 65-Over Below Poverty Level	% of Total Pop.	Total Pop.
<b>Washington County</b>	2,563	23.5%	521	4.8%	1,327	12.2%	535	4.9%	10,916
TRACT 9801	338	12.7%	98	3.7%	202	7.6%	22	0.8%	2,660
Block Grp. 1	104	9.4%	21	1.9%	75	6.8%	8	0.7%	1,102
Block Grp. 2	234	15.0%	77	4.9%	127	8.2%	14	0.9%	1,558
TRACT 9802	791	12.8%	124	2.0%	383	6.2%	219	3.5%	6,195
Block Grp. 2	164	11.5%	20	1.4%	86	6.0%	36	2.5%	1,424
Block Grp. 3	166	17.4%	22	2.3%	70	7.4%	71	7.5%	952
Block Grp. 4	140	13.2%	13	1.2%	66	6.2%	59	5.6%	1,057
Block Grp. 5	228	18.8%	69	5.7%	119	9.8%	19	1.6%	1,211
TRACT 9803	305	14.8%	77	3.7%	157	7.6%	53	2.6%	2,061
Block Grp. 1	162	16.7%	42	4.3%	89	9.2%	20	2.1%	971
Block Grp. 2	143	13.1%	35	3.2%	68	6.2%	33	3.0%	1,090



## Comparison Table for 2000 Population by Age : Nation, State, City, County

Figure 8.0

	<b>Age 0-17</b>	<b>% of Total Population</b>	<b>Age 18-64</b>	<b>% of Total Population</b>	<b>Age 65-Over</b>	<b>% of Total Population</b>	<b>Total</b>
<b>United States</b>	72,142,756	25.6%	174,300,177	61.9%	34,978,882	12.4%	281,421,906
<b>Kentucky</b>	993,841	24.6%	2,544,260	63.0%	503,668	12.5%	4,041,769
<b>Adair County</b>	4,047	23.5%	10,226	59.3%	2,515	14.6%	17,244
<b>Green County</b>	2,608	22.6%	6,952	60.4%	1,951	16.9%	11,518
<b>Taylor County</b>	5,279	23.0%	14,042	61.3%	3,453	15.1%	22,927
<b>Marion Co.</b>	4,596	25.2%	11,277	61.9%	2,339	12.8%	18,212
<b>Washington Co.</b>	2,757	25.3%	6,526	59.8%	1,633	15.0%	10,916

Figure 8.1

	<b>Age 0-17</b>	<b>% of Total Population</b>	<b>Age 18-64</b>	<b>% of Total Population</b>	<b>Age 65-Over</b>	<b>% of Total Population</b>	<b>Total</b>
<b>Adair Co.</b>	4,047	23.5%	10,226	59.3%	2,515	14.6%	17,244
TRACT 9702	345	22.9%	990	65.7%	173	11.5%	1508
Block Grp. 1	345	22.9%	990	65.7%	173	11.5%	1508
Tract 9704	1561	20.7%	4590	61.0%	1307	17.4%	7530
Block Grp. 1	592	28.0%	1286	60.8%	236	11.2%	2114
Block Grp. 2	225	23.0%	552	56.5%	200	20.5%	977
Block Grp. 3	255	22.9%	680	61.0%	180	16.1%	1115
Block Grp. 4	136	15.9%	313	36.6%	335	39.1%	856
Block Grp. 5	192	12.5%	1155	75.2%	189	12.3%	1536
Block Grp. 6	161	17.3%	604	64.8%	167	17.9%	932
TRACT 9705	625	26.1%	1469	61.3%	288	12.0%	2395
Block Grp. 1	326	26.2%	754	60.6%	164	13.2%	1244
Block Grp. 2	299	26.0%	715	62.1%	124	10.8%	1151

## Comparison Table for 2000 Population by Age : Nation, State, City, County

Figure 8.2

	Age 0-17	% of Total Population	Age 18-64	% of Total Population	Age 65-Over	% of Total Population	Total
<b>Green Co.</b>	2,608	22.6%	6,952	60.4%	1,951	16.9%	11,518
TRACT 9902	955	22.0%	2508	57.7%	886	20.4%	4349
Block Grp. 1	272	22.4%	784	64.6%	157	12.9%	1213
Block Grp. 4	166	21.4%	412	53.0%	199	25.6%	777
TRACT 9904	352	20.4%	1088	63.0%	288	16.7%	1728
Block Grp. 1	182	19.8%	584	63.3%	157	17.0%	923

Figure 8.3

	Age 0-17	% of Total Population	Age 18-64	% of Total Population	Age 65-Over	% of Total Population	Total
<b>Taylor Co.</b>	5,279	23.0%	14,042	61.3%	3,453	15.1%	22,927
TRACT 9801	677	29.3%	1400	60.6%	199	8.6%	2311
Block Grp. 2	485	30.0%	978	60.4%	131	8.1%	1620
TRACT 9802	631	21.6%	1868	64.0%	421	14.4%	2920
Block Grp. 1	420	27.2%	981	63.4%	146	9.4%	1547
Block Grp. 2	88	11.8%	483	64.6%	177	23.7%	748
Block Grp. 3	123	19.7%	404	64.6%	98	15.7%	625
TRACT 9803	884	20.4%	2510	58.0%	883	20.4%	4325
Block Grp. 1	248	29.3%	493	58.2%	106	12.5%	847
Block Grp. 2	366	20.1%	1087	59.7%	320	17.6%	1821
Block Grp. 3	134	18.3%	354	48.4%	244	33.3%	732
Block Grp. 4	136	14.7%	576	62.3%	213	23.0%	925
TRACT 9804	1469	21.0%	4496	64.2%	982	14.0%	7007
Block Grp. 1	934	27.5%	2017	59.4%	443	13.1%	3394
Block Grp. 2	138	16.0%	542	62.7%	184	21.3%	864
Block Grp. 3	214	12.9%	1213	72.9%	188	11.3%	1665
Block Grp. 4	183	16.9%	724	66.8%	167	15.4%	1084
TRACT 9805	1618	25.4%	3768	59.2%	968	15.2%	6364
Block Grp. 1	288	32.3%	466	52.3%	137	15.4%	891
Block Grp. 2	99	15.2%	346	53.0%	208	31.9%	653
Block Grp. 3	331	32.7%	605	59.8%	75	7.4%	1011
Block Grp. 4	403	28.1%	903	63.0%	128	8.9%	1434
Block Grp. 6	251	25.7%	633	64.9%	91	9.3%	975
Block Grp. 7	99	14.3%	410	59.2%	184	26.6%	693

Source: US Census Bureau, 2000 Census

## Comparison Table for 2000 Population by Age : Nation, State, City, County

Figure 8.4

	Age 0-17	% of Total Population	Age 18-64	% of Total Population	Age 65-Over	% of Total Population	Total
<b>Marion Co.</b>	4,596	25.2%	11,277	61.9%	2,339	12.8%	18,212
TRACT 9702	1,012	23.6%	2,545	59.4%	724	16.9%	4,281
Block GRP. 1	117	17.9%	358	54.8%	178	27.3%	653
Block Grp. 2	169	24.1%	374	53.3%	159	22.6%	702
Block Grp. 3	427	29.4%	814	56.0%	212	14.6%	1,453
Block Grp. 4	299	20.3%	999	67.8%	175	11.9%	1,473
TRACT 9703	554	21.7%	1,871	73.3%	128	5.0%	2,553
Block Grp. 1	554	21.7%	1,871	73.3%	128	5.0%	2,553
TRACT 9705	424	25.5%	1,051	63.2%	188	11.3%	1,663
Block Grp. 2	190	27.3%	428	61.4%	79	11.3%	697
TRACT 9707	1,341	27.1%	2,954	59.7%	655	13.2%	4,950
Block Grp. 1	386	30.2%	775	60.6%	117	9.2%	1,278
Block Grp. 4	433	27.1%	996	62.3%	169	10.6%	1,598

Figure 8.5

	Age 0-17	% of Total Population	Age 18-64	% of Total Population	Age 65-Over	% of Total Population	Total
<b>Washington Co.</b>	2,757	25.3%	6,526	59.8%	1,633	15.0%	10,916
TRACT 9801	703	26.4%	1,645	61.8%	312	11.7%	2,660
Block Grp. 1	276	25.0%	716	65.0%	110	10.0%	1,102
Block Grp. 2	427	27.4%	929	59.6%	202	13.0%	1,558
TRACT 9802	1,533	24.7%	3,595	58.0%	1,067	17.2%	6,195
Block Grp. 2	359	25.2%	842	59.1%	223	15.7%	1,424
Block Grp. 3	189	19.9%	520	54.6%	243	25.5%	952
Block Grp. 4	232	21.9%	571	54.0%	254	24.0%	1,057
Block Grp. 5	332	27.4%	705	58.2%	174	14.4%	1,211
TRACT 9803	521	25.3%	1,286	62.4%	254	12.3%	2,061
Block Grp. 1	236	24.3%	606	62.4%	129	13.3%	971
Block Grp. 2	285	26.1%	680	62.4%	125	11.5%	1,090